




LPG storage facility / 16 May 2019 / Dany S T

DSEAR Risk Assessment Template Conducted on 16th May, 2019 By SafetyCulture Staff

Complete

Failed items	Created actions
0	2
Site/Area/Zone LPG storage facility	
Conducted on 📅 16th May, 2019 ⌚ 12:07 PM +08	
Prepared by Dany S T	
Location Warwick House Central Avenue Manchester M19 2FF England (53.44780891143987, -2.19438030454135)	

SafetyCulture Staff created a High priority action

To Do  16th May, 2019 8:00 AM +08


Electrical check

Hello Minni! We need Jon S to do an electrical check of our new storage room. I'm afraid that the new wiring may be a risk to the stored lpg containers. Thank you.

DSEAR Risk Assessment / Risk Assessment / Bulk storage of flammable liquids / Actions / Action Number : 1

Responsible person/s

SafetyCulture Staff created a Medium priority action

To Do  21st May, 2019 8:00 AM +08


Electrical inspection needed

Electrical inspection needed for the newly renovated storage room. Please contact our trusted electrician, Jon S.



DSEAR Risk Assessment / Risk Assessment / Bulk storage of flammable liquids / Actions / Action Number : 1

Responsible person/s

Information

Substance Name: Liquid petroleum gas (LPG)
Photo (optional) Photos  Photo 1
Category (select all that apply) Explosive Explosive Atmosphere Extremely Flammable
Flash point -104 Celsius
Auto ignition temperature 410-580 Celsius
Lower explosive limit 2.2%

Usage

Where is the substance used/generated? Newly opened bakery
Amount used/generated (specify units of measurement)? 15 kg
Amount stored (if applicable) - specify units 150 kg
How is it stored? New storage room
Substance can be: Neither eliminated nor substituted
Measures currently in place Storage room is temperature controlled and we have newly installed gas detectors
Photo of measures in place (optional) Photos   Photo 2 Photo 3
List potential ignition source/s (Examples could be an electrical spark caused by connection or disconnection of leads to a battery, naked flame e.g. pilot lights, smoking etc) Possible electrical spark from exposed wire I found.
Employees at risk Bakers and employees on site
Relevant operator and/or supervisor training All our employees are certified and trained to work at our facility

Risk Assessment

In order to assess the risk, select the appropriate items below related to this assessment

Bulk storage of flammable liquids

Bulk storage of flammable liquids?	Yes
Existing control measures: Temperature controlled storage room and digital sensors	
Severity	Major fire or plant wrecking explosion with significant injury potential
Likelihood	Unlikely - Good process control
Risk rating	Low

Actions

Action Number : 1

2 Actions

<p>Details of action</p> <p>The storage room’s temperature is maintained and we have new sensors installed but we need to recheck the electrical wiring. The site is newly renovated but I am not satisfied with the room.</p>
<p>Responsible person/s</p> <p>Jon S</p>
<p>Actions</p> <div style="border: 1px solid #ccc; padding: 5px;"> <p>To Do Hello Minni! We need Jon S to do an electrical check of our new storage room. I’m afraid that the new wiring may be a risk to the stored lpg containers. Thank you.</p> <p>To Do Electrical inspection needed for the newly renovated storage room. Please contact our trusted electrician, Jon S.</p> </div>

Flammable liquid storage in containers

Flammable liquid storage in containers?	No
---	----

Hand Painting with flammable liquids

Hand Painting with flammable liquids?	No
---------------------------------------	----

Spraying with the flammable liquids

Spraying with the flammable liquids?	No
--------------------------------------	----

Handling of flammable solids

Handling of flammable solids?	No
-------------------------------	----

Dust collection system

Dust collection system?	No
-------------------------	----

Sources of ignition and hot work

Sources of ignition and hot work?	Yes
Existing control measures? Smoke detectors	
Severity	Small localised fire, easily extinguished or contained in plant explosion causing no damage
Likelihood	Unlikely - Good process control
Risk rating	Low

Actions

Gas freeing and inerting

Gas freeing and inerting?	No
---------------------------	----

Storage and use of compressed flammable gases

Storage and use of compressed flammable gases?	Yes
Existing control measures? Temperature controlled kitchen with sensor and fire detectors	
Severity	Explosion of fire causing plant damage and requiring RIDDOR reporting
Likelihood	Unlikely - Good process control
Risk rating	Low

Actions

All cylinders are dangerous. The following should never occur:

- The use of gas cylinders as rollers to transport heavy sections.
- Never use direct flame for any heating to raise the pressure of the cylinder.
- Never subject any cylinder to a temperature over 45°C.
- Never recompress one cylinder from another.
- Never attempt to transfer gases from one cylinder to another.
- Never permit oil, grease or paint or similar substance to come into contact with oxygen cylinder valves.
- Never attempt to repair or modify cylinder valves or devices.
- Never allow electric arc welding tools to come near cylinders.
- Do not allow welding sparks and slag to make contact with cylinders.
- Never use anything but the recommended cylinder valve keys and never attempt to increase the leverage of keys.
- If you suspect that a cylinder valve is damaged, do not attempt to obtain gas from it.

USE OF LPG

The use of the LPG gas, once delivered for use in its gaseous as opposed to liquid form will need to be risk assessed but on the assumption that the delivery mains are to LPG ITA Standards the topic is best risk assessed according to the item of plant that the gaseous LPG is serving. This could be anything from profile cutting machines through to hot mill furnaces or simply space heating.

As with most fixed services it is probably the maintenance element where there will be greatest risk.

Dispensing petrol

Dispensing petrol?	No
--------------------	----

Battery Charging

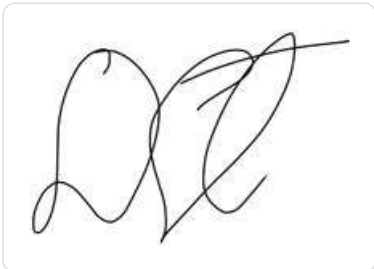
Battery Charging?	No
-------------------	----

Other Actions

Permits to work acquired?	Yes
---------------------------	-----

Is Zoning required	Yes
--------------------	-----

Completion

Recommendations	
Risk discovered from possible source of electrical spark at the renovated storage room. I tasked Minni to contact electrician Jon S to check and ensure there is no risk.	
Signature	
	Dany S T 16th May, 2019 1:04 PM +08

Photos

3 Photos



Photo 1



Photo 2

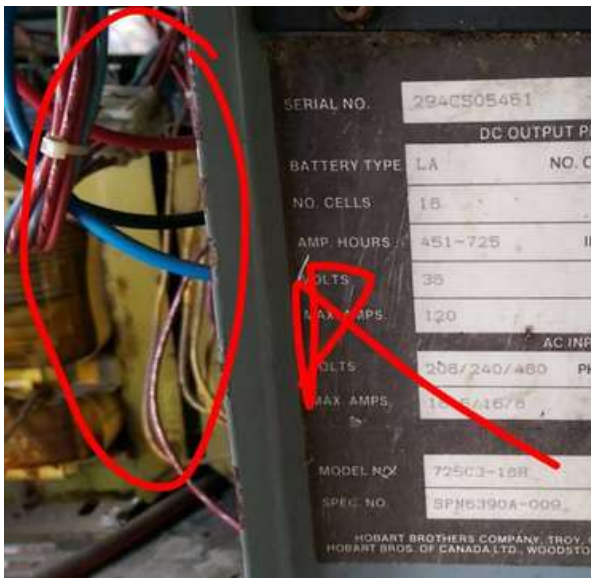


Photo 3