



PPE Checklist

conducted for

Surry Hills Lab

Company Name

Logical Laboratories

Conducted on

26 Apr 2018 01:41 PM

Prepared by

SafetyCulture Staff

Location

65 Cooper St, Surry Hills NSW 2010, Australia


Completed on



26 Apr 2018 01:46 PM


Score



8/10.0 - 80.00%

PPE Evaluation Form - 8/10 80.00%

Question	Response	Details
Nature of work	Laboratory (Chemical Handling)	
Identify potential hazards at work (select all that apply)	Body/Torso, Eye , Hand, Head/Neck/Face, Respiratory	
EYE HAZARDS		Score (2/2) 100.00%
Handling/dispensing chemicals and ingredients; working around UV lights; chipping, sanding, grinding, welding, metal working; tasks that generate dust		
Select all that apply for each hazard from the drop down list.	Chemical Exposure, Dust Particulates, Dust/Flying Debris	
Description of Hazard	Corrosive chemicals which is harmful when they explode	
Required PPE	Safety glasses with side shields, chemical splash goggles	
Does the equipment undergo testing and in a good condition?	Yes	Goggle are in good working condition. Lenses are clean without any debris or dirt for clear vision
Does the equipment fit perfectly?	Yes	They fit perfectly on cheeks and forehead
		
Appendix 1		
HEAD/NECK/FACE HAZARDS		Score (2/2) 100.00%
Handling/dispensing chemicals and ingredients, chipping, sanding or grinding metal or wood; working below others, working on energized equipment, working in confined spaces		
Select all that apply for each hazard from the drop down list.	Chemical Exposure, Dust Particulates, Dust/Flying Debris, UV/IR Radiation	
Description of Hazard	Dispensing chemicals, spills	
Required PPE	Full face shields	
Does the equipment undergo testing and in a good condition?	Yes	Face shields have no dents and marks

Question	Response	Details
Does the equipment fit perfectly?	Yes	
HAND HAZARDS		Score (1/2) 50.00%
Handling/dispensing chemicals and ingredients; exposure to abrasive materials; using knives or other sharp objects; working with hot or cold materials; food service prep		
Select all that apply for each hazard from the drop down list.	Chemical Exposure, High Heat/COLD, Puncture	
Description of Hazard	Handling chemicals specially those with high temperatures	
Required PPE	Protective gloves, full arm length rubber gloves, thermal gloves	
Does the equipment undergo testing and in a good condition?	No	Using broken gloves increase risk of burns and chemical reaction on hands. Make sure to change used gloves regularly.
<p>REFERENCE: Gloves are resistant to chemicals [This is an example of how you can use iAuditor to include best practice reference images in your templates to assist with inspections]</p>		
		
<p>Take a photo</p>  <p>Appendix 2</p>		

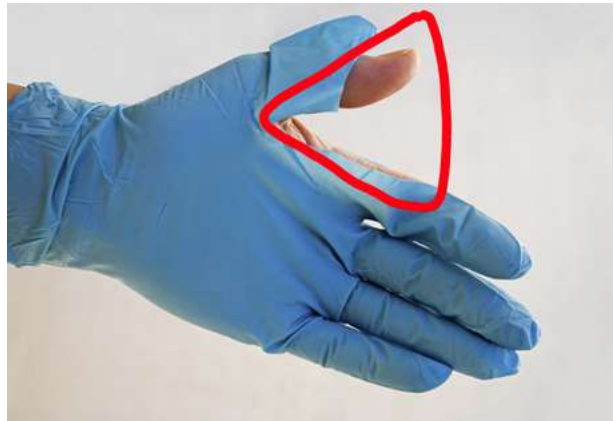
Question	Response	Details
Does the equipment fit perfectly?	Yes	
BODY/TORSO HAZARDS		Score (1/2) 50.00%
Handling/dispensing chemicals or ingredients; exposure to abrasive materials; cutting, brazing, welding, chipping or sanding; working around electrical panels		
Select all that apply for each hazard from the drop down list.	Chemical Exposure, Dust Particulates	
Description of Hazard	Risk of burns and exposure of skin to chemical stains and contamination	
Required PPE	Lab coats, full length lab apron	
Does the equipment undergo testing and in a good condition?	No	We saw dirty lab coats. Ensure that lab coats must be clean and free from stains because the chemicals might cause harm to other people getting in contact with it. Also, This lab coat is cluttering the bench. It could be a potential fire hazard or become contaminated with a hazardous substance.
Take a photo		
		
Does the equipment fit perfectly?	Yes	
RESPIRATORY HAZARDS		Score (2/2) 100.00%
Handling/using highly hazardous chemicals; tasks that generate dust and/or fumes; cutting, brazing on certain metals (stainless steel);		
Select all that apply for each hazard from the drop down list.	Chemical Exposure, Dust Particulates, Dust/Flying Debris	
Description of Hazard	Exposure to dangerous vapors	
Required PPE	Respirators	
Does the equipment undergo testing and in a good condition?	Yes	

Question	Response	Details	
Does the equipment fit perfectly?	Yes	It fits perfectly. Straps are tight	
 <p data-bbox="140 472 256 499">Appendix 5</p>			
RECOMMENDATION			
State recommendations here	<ol style="list-style-type: none"> 1. Wear long pants and closed shoes. 2. Remove jewelry before entering the lab. 3. Tie back long hair. 4. Bring only the important things you need. 5. Leave personal items like bags, jackets or purses outside to avoid contamination. 6. Use gloves which are resistant to chemicals being handled. Change your gloves and wash your hands frequently. 7. Always button your coat 8. Use the apron when you are working with splash chemicals and reactive solutions. 9. Use thermal gloves when handling equipment with extreme temperatures. 10. Only use a respirator after undergoing proper training. Ask lab manager for the training. 11. Always remove PPE and wash your hands before leaving the lab because you can spread biological contamination like using your phones inside while wearing your gloves on. 		
COMPLETION			
Auditor's Full Name and Signature	Peter Morris	26 Apr 2018 01:53 PM	

Media



Appendix 1



Appendix 2



Appendix 3



Appendix 4



Appendix 5