



Industrial Safety Checklist

28 Jul 2020 / Ellena Whitson / Gooding & Whitson
Petrochemicals Pty. Ltd.

Complete

Score	80.65%	Failed items	17	Actions	8
Company Name	Gooding & Whitson Petrochemicals Pty. Ltd.				
Registered Address	685 W Van Asche Dr, Fayetteville, AR 72704, USA				
Inspected by	Ellena Whitson				
Conducted on	28th Jul, 2020 9:36 AM +08				

Failed Items & Actions

17 failed, 8 actions

Failed items

17 failed, 8 actions

Inspection / Training

Does initial training include a thorough review of hazards and incidents associated with the job?

No

To do | Assignee Alexis Delacruz | Priority Medium | Due 4th Aug, 2020 1:58 PM +08 | Created by SafetyCulture Staff

Perform thorough hazard identification assessment

Inspection / Environment

Are resources available to deal with very hot or very cold conditions (drinking water, lined gloves, insulated boots)?

No

To do | Assignee Juhlian Pimping | Priority Low | Due 11th Aug, 2020 1:59 PM +08 | Created by SafetyCulture Staff

Discuss the resources needed to deal with harsh weather conditions

Inspection / Environment

Is the rain/cold weather gear that is provided comfortable, and light enough so as not to constitute a hazard?

No

Inspection / Lighting

Is emergency lighting adequate and regularly tested?

No

emergency lighting did not work when tested



Photo 2

Inspection / Elevating Devices

Are they regularly inspected, tested and maintained?

No

To do | Assignee Howie Mann | Priority High | Due 31st Jul, 2020 2:05 PM +08 | Created by SafetyCulture Staff

Schedule overhead crane daily maintenance check

Inspection / Electrical

Is the proper code followed for operation, use, repair and maintenance?

No

shows reverse polarity, potential shock hazard



Photo 4

To do | Assignee **Liam Dent** | Priority **High** | Due **5th Aug, 2020 2:08 PM +08** | Created by **SafetyCulture Staff**

Repair electric socket A5L1

Inspection / Materials Handling and Storage

Are only trained operators allowed to operate forklifts?

No

interview with this operator revealed he hasn't checked the condition of the forklift before using it



Photo 10

To do | Assignee **Scott Beauman** | Priority **High** | Due **6th Aug, 2020 2:13 PM +08** | Created by **SafetyCulture Staff**

Train operator on forklift pre-use checklist

Inspection / Materials Handling and Storage

Are chain hoists, ropes and slings adequate for the loads and marked accordingly?

No

see action on elevating devices (overhead crane)

Inspection / Materials Handling and Storage

Are slings inspected daily before use?

No

see action on elevating devices (overhead crane)

Inspection / Hazardous Product / Chemical Storage

Are containers checked for leaks or damage?

No

To do | Assignee Tom Balme | Priority High | Due 4th Aug, 2020 4:30 PM +08 | Created by SafetyCulture Staff

Check all containers and labels ASAP

Inspection / Hazardous Product / Chemical Storage

Are containers stored in drip trays where necessary?

No

see action on container check

Inspection / Hazardous Product / Chemical Storage

Are all products labelled, and are missing or damaged labels replaced immediately?

No

see action on container check

Inspection / Work Process

Have all trucks, forklifts and other equipment been inspected and maintained?

No

see action on forklift pre-use checklist

Inspection / Fire Emergency Procedures

Are extinguishers properly mounted and easily accessible?

No

fire extinguisher #012 was on the floor but moved it to the proper location

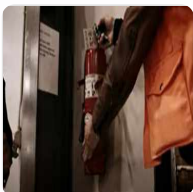


Photo 12

Inspection / Means of Exit

Are exits clearly marked?

No

To do | Assignee Tony Mickaeal | Priority Medium | Due 10th Aug, 2020 2:20 PM +08 | Created by SafetyCulture Staff

Plan out clarity in means of exits in case of an emergency

Inspection / Means of Exit

Are exits and exit routes accessible (e.g., no items stored in the pathway or doorway)?

No

Inspection / Medical and First Aid

Are first-aid supplies replenished as they are used?

No

To do | Assignee Arghya Sen | Priority Low | Due 20th Aug, 2020 2:21 PM +08 | Created by SafetyCulture Staff

Use first aid checklist to complete supplies replenishment

Other actions

0 actions

Inspection

8 actions, 17 failed, 80.65%

Training

1 action, 1 failed, 75%

Is training provided for each person newly assigned to a job?

Yes

new equipment hands-on training



Photo 1

Does initial training include a thorough review of hazards and incidents associated with the job?

No

To do | Assignee Alexis Delacruz | Priority Medium | Due 4th Aug, 2020 1:58 PM +08 | Created by SafetyCulture Staff

Perform thorough hazard identification assessment

Is adequate instruction in the use of personal protective equipment provided?

Yes

Is training for the use of emergency equipment provided?

Yes

Environment

1 action, 2 failed, 50%

Are resources available to deal with very hot or very cold conditions (drinking water, lined gloves, insulated boots)?

No

To do | Assignee Juhlian Pimping | Priority Low | Due 11th Aug, 2020 1:59 PM +08 | Created by SafetyCulture Staff

Discuss the resources needed to deal with harsh weather conditions

Is the rain/cold weather gear that is provided comfortable, and light enough so as not to constitute a hazard?

No

Are work surfaces and grip surfaces safe when wet?

Yes

Do workers know the symptoms of heat cramps/heatstroke, or frost bite/hypothermia?

Yes

Lighting

1 failed, 50%

Is the level of light adequate for safe and comfortable performance of work?

Yes

Does lighting produce glare on work surfaces, monitors, screens and keyboards?

N/A

Is emergency lighting adequate and regularly tested?

No

emergency lighting did not work when tested



Photo 2

Floor and Wall Openings

100%

Are ladder-ways and door openings guarded by a railing?

Yes

Do temporary floor openings have standard railings or someone constantly on guard?

N/A

Stairs, Ladders, and Platforms

100%

Are stairs and handrails in good condition?

Yes

Are ladders free of defects?

Yes

Are ladders set up properly before use?

Yes

Are the elevated platforms properly secured and do they have handrails?

N/A

Elevating Devices

1 action, 1 failed, 75%

Are elevating devices used only within their capacity?

Yes

Are capacities posted on equipment?

Yes

Are they regularly inspected, tested and maintained?

No

To do | Assignee **Howie Mann** | Priority **High** | Due **31st Jul, 2020 2:05 PM +08** | Created by **SafetyCulture Staff**

Schedule overhead crane daily maintenance check

Are operators trained?

Yes

Confined Spaces

Are the confined space procedures and training available and followed by all involved?

N/A

Are entry and exit procedures adequate?

N/A

Are emergency and rescue procedures in place (e.g. trained safety watchers)?

N/A

Housekeeping

100%

Is the work area clean and orderly?

Yes

Are floors free from protruding nails, splinters, holes and loose boards?

Yes

Are aisles and passageways kept clear of obstructions?

Yes



Photo 3

Are permanent aisles and passageways clearly marked?

Yes

Are covers or guardrails in place around open pits, tanks and ditches?

N/A

Electrical

1 action, 1 failed, 83.33%

Is the proper code followed for operation, use, repair and maintenance?

No

shows reverse polarity, potential shock hazard



Photo 4

To do | Assignee Liam Dent | Priority High | Due 5th Aug, 2020 2:08 PM +08 | Created by SafetyCulture Staff

Repair electric socket A5L1

Are all machines properly grounded?

Yes

Are portable hand tools grounded or double insulated?

Yes

Are junction boxes closed?

Yes

Are extension cords out of the aisles where they can be abused by heavy traffic?

Yes

Is permanent wiring used instead of extension cords?

Yes

Tools and Machinery

100%

Are manufacturers' manuals kept and followed for all tools and machinery?

Yes



Photo 5

Do power tools conform to standards?

Yes

Are defective tools tagged and removed from service as part of a regular maintenance program?

Yes

Is proper training given in the safe use of tools and machinery?

Yes

Machine Guards

100%

Are all machine parts adequately guarded?

Yes



Photo 6

Do machine guards meet standards?

Yes

Are all guards in place and operating as designed?

Yes

Are lockout procedures followed when performing maintenance with guards removed?

Yes

Lockout procedures finally in place, compared to last month's non-compliance



Photo 7

Sound Level/Noise

Are regular noise surveys conducted?

N/A

Is hearing protection available and used properly?

N/A

Temporary Work Structures

Are temporary work structures used only when it is not reasonably practicable to use permanent ones?

N/A

Are excavations properly shored, free of large objects (rocks, etc.) at the edges?

N/A

Personal Protective Equipment (PPE)

100%

Is required PPE provided, maintained and used?

Yes

Has the PPE been chosen to protect against the hazards that are present?

Yes

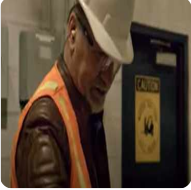


Photo 8

Is the PPE reliable?

Yes

Are the areas requiring PPE usage properly identified by warning signs?

Yes



Photo 9

Materials Handling and Storage

1 action, 3 failed, 75%

Is there safe clearance for all equipment through aisles and doors?

Yes

Is stored material stable and secure?

Yes

Are storage areas free from tipping hazards?

Yes

Are only trained operators allowed to operate forklifts?

No

interview with this operator revealed he hasn't checked the condition of the forklift before using it



Photo 10

To do | Assignee Scott Beauman | Priority High | Due 6th Aug, 2020 2:13 PM +08 | Created by SafetyCulture Staff

Train operator on forklift pre-use checklist

Is charging of electric batteries performed only in designated areas?

Yes

Are necessary warning devices and signs in use for railway sidings?

Yes

Are specifications posted for maximum loads which are approved for shelving, floors and roofs?

Yes

Are racks and platforms loaded only within the limits of their capacity?

Yes

Are chain hoists, ropes and slings adequate for the loads and marked accordingly?

No

see action on elevating devices (overhead crane)

Are slings inspected daily before use?

No

see action on elevating devices (overhead crane)

Are pallets and skids the correct type and inspected?

Yes

Do personnel use proper lifting techniques?

Yes

Hazardous Product / Chemical Storage

1 action, 3 failed, 70%

Has the safety data sheet (SDS) been reviewed before handling, moving, or storing the product?

Yes

Is appropriate PPE used for that product?

Yes

Is the storage area and products organized to keep incompatible products separated?

Yes

Are hazardous products stored away from heat sources?

Yes

Are containers checked for leaks or damage?

No

To do | Assignee Tom Balme | Priority High | Due 4th Aug, 2020 4:30 PM +08 | Created by SafetyCulture Staff

Check all containers and labels ASAP

Are containers stored in drip trays where necessary?

No

see action on container check

Are all products labelled, and are missing or damaged labels replaced immediately?

No

see action on container check

Is spill cleanup material immediately available?

Yes

Are bonding and grounding connections immediately available for flammable products?	Yes
Is the ventilation for the storage area adequate for the products stored within?	Yes

Work Process 1 failed, 87.5%

Are repetitive motion tasks properly paced and kept to a minimum?	Yes
Are the safety data sheets accessible to all employees?	Yes
Are hazards signalled by signs and tags?	Yes
Have all trucks, forklifts and other equipment been inspected and maintained?	No

see action on forklift pre-use checklist

Are lockout or tagout procedures in place and followed?	Yes
Is ventilation equipment working effectively?	Yes
Is the fume and dust collection hood working effectively?	Yes
Are the safety showers and eye wash stations in the proper locations and in good working condition?	Yes

eye wash station, all good

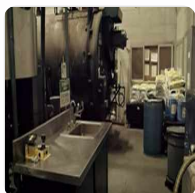


Photo 11

Employee Facilities 100%

Are facilities kept clean and sanitary?	Yes
Are facilities in good repair?	Yes
Are cafeteria facilities provided away from hazardous products?	Yes
Are hand washing facilities available, especially in washrooms and near eating areas?	Yes

Fire Emergency Procedures 1 failed, 87.5%

Is there a clear fire response plan posted for each work area?	Yes
Do all workers know the plan?	Yes

Are fire extinguishers chosen for the type of fire most likely in that area?	Yes
Are there enough extinguishers present to do the job?	Yes
Are extinguisher locations conspicuously marked?	Yes
Are extinguishers properly mounted and easily accessible?	No

fire extinguisher #012 was on the floor but moved it to the proper location



Photo 12

Are all extinguishers fully charged and operable?	Yes
Are special purpose extinguishers clearly marked?	Yes

Means of Exit

1 action, 2 failed, 50%

Are there enough exits to allow prompt escape?	Yes
Do employees have easy access to exits?	Yes
Will exit doors open in an emergency to allow egress?	Yes
Are exits clearly marked?	No

To do | Assignee Tony Mickaeal | Priority Medium | Due 10th Aug, 2020 2:20 PM +08 | Created by SafetyCulture Staff

Plan out clarity in means of exits in case of an emergency

Are exits and exit routes equipped with emergency lighting?	
Are exits and exit routes accessible (e.g., no items stored in the pathway or doorway)?	No

Medical and First Aid

1 action, 1 failed, 80%

Do all employees know how to get first aid assistance when needed?	Yes
Do the first-aiders know when and to which hospital or clinic an injured person should be taken?	Yes
Are there employees trained as first-aid practitioners on each shift worked?	Yes
Are first-aid kits provided as per regulations?	Yes

Are first-aid supplies replenished as they are used?

No

To do | Assignee Arghya Sen | Priority Low | Due 20th Aug, 2020 2:21 PM +08 | Created by SafetyCulture Staff

Use first aid checklist to complete supplies replenishment

Completion

Additional Comments

How can we allow operators who forget to check the forklift before using them? We have electrical sockets that pose shock hazards and fire extinguishers lying on the floor pose such a trip hazard. We can improve industrial safety by empowering our workers to do these inspections regularly and take a proactive approach to mitigating these risks.

Industrial Safety Inspector Name and Signature

Ellena Whitson

Appendix



Photo 1



Photo 2



Photo 3



Photo 4



Photo 5



Photo 6



Photo 7



Photo 8



Photo 9



Photo 10



Photo 11



Photo 12