



3J's Construction Company / 28 Feb 2020 / Gill Terone

CDM Checklist (Designers)

Complete

Inspection score	Failed items	Created actions
85.71%	1	1

Production Company 3J's Construction Company
Programme Title ABC Project
Conducted on (Date and Time) <input type="checkbox"/> 28th Feb, 2020 <input type="checkbox"/> 8:07 AM +08
Designer Gill Terone
Location 39-41 high streets peterport, Moffat GY1 2JT, UK

Inspection / The Location

Has an asbestos survey been carried out on the location and all areas that are known to contain asbestos-containing materials are marked up as such and recorded on the asbestos register for the building?

No

– Notes

The asbestos survey is not yet complete


– Actions

To Do Follow up on asbestos survey

Actions

1 Action

SafetyCulture Staff created a High priority action

To Do  9th Mar, 2020 4:00 PM +08

Follow up on asbestos survey

Has an asbestos survey been carried out on the location and all areas that are known to contain asbestos-containing materials are marked up as such and recorded on the asbestos register for the building?

Inspection / The Location

Inspection

1 Failed 1 Action 85.71%

General Information

Description of the Set: (Include details of set construction materials being used, specifications, any load-bearing structures)

Steel (300 MPa)
 Concrete (25 MPa)
 Masonry (10 MPa)
 Wood (5 Mpa)

Take a photo of design drawings

– Photos



Photo 1

The Location

1 Failed 1 Action

Ensure you have adequate information about the production location or studio before design commences, including access and local resources

Yes

Has an asbestos survey been carried out on the location and all areas that are known to contain asbestos-containing materials are marked up as such and recorded on the asbestos register for the building?

No

– Notes

The asbestos survey is not yet complete

– Actions

To Do Follow up on asbestos survey

Are ground conditions suitable for the build

Yes

Has the previous use of land been checked to ascertain if any risk of chemical contamination – eg old chemical factory/plant

Yes

Where necessary, have structural surveys been carried out on the location to ascertain the weight loadings of floors to be built on etc.

Yes

Where necessary, have checks on the existing utility services, e.g. gas/electrics been carried out to check for any underground cables/mains that may be disturbed by construction work.

Yes

Have the heights and widths of the studio been checked to ensure the size of scenic elements can be safely installed?

Yes

Materials used in set build (Fire Risk)

Materials used in set build (Fire Risk) 1

Hazardous activity Care should be taken to limit all set construction and dressing for scenery as a fuel in the event of a fire. Where possible, materials should be treated with a fire retardency chemical.
People at risk Workers
Controls Substitution

Materials used in set build (Fire Risk) 2

Hazardous activity Paints, including cellulose nitrate based paints must not be used on scenery without risk assessment and studio management approval
People at risk Workers
Controls Substitution

Materials used in set build (Load-bearing risks)

Materials used in set build (Load-bearing risks) 1

Hazardous activity Any scaffold structures that are designed to be load bearing must be erected by competent scaffolders and signed off and certified by a competent person.
People at risk Workers
Controls Elimination

Use of Practical Flames in set

Use of Practical Flames in set 1

Hazardous activity Real flame or practical flame used on a production set must always be kept an adequate distance from staff, artists and audience
People at risk Workers
Controls Substitution

Revolving (Moving Parts/Entertainment)

Revolves (Moving Parts/Entrapment)

Revolves (Moving Parts/Entrapment) 1

Hazardous activity Safe Design - Revolves must be designed and manufactured so as to ensure the clearance is smaller than the width of fingers. Thus there is no risk of the hand or fingers entering the gap and becoming trapped. The size of the gaps should be considered if children interact with the revolve
People at risk Workers
Controls Substitution

Revolves (Moving Parts/Entrapment) 2

Hazardous activity Edge Warning - For lower risk revolves where the action can be rehearsed or choreographed, some form of border to the revolve, clearly indicating its position may help reduce the risks
People at risk Workers
Controls Elimination

Water

Water 1

Hazardous activity Use illusory effects
People at risk Workers
Controls Substitution

Rostra & Risers

Rostra & Risers 1

Hazardous activity Ensure stairs are firmly fixed so that they cannot move when in use
People at risk Workers
Controls Substitution

Rostra & Risers 2

Hazardous activity

Availability of sufficient personnel to move rostra

People at risk

Workers

Controls

Administrative

Completion

Recommendations

Make sure the asbestos survey has been completed and review the hazards identified.

Designer Sign-off



Gill Terone

28th Feb, 2020 9:42 AM +08

Media summary

1 Photos

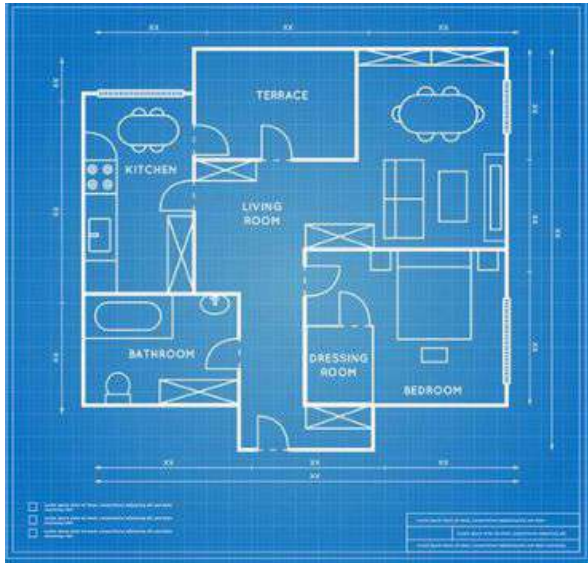


Photo 1