




## 31 Jul 2019 / Manila / Linery International / Garmends Asia Pacific

Garment Quality Control Checklist

Complete

Inspection score	Failed items	Created actions
<b>90.00%</b>	<b>2</b>	<b>0</b>
Site <b>Manila</b>		
Conducted on 📅 31st Jul, 2019 ⌚ 3:00 PM +08		
Inspector's Name <b>Jonathan Tarlengco</b>		
Location <b>1059 San Rafael St, Mandaluyong, 1550 Metro Manila, Philippines</b>		
Report Number <b>2019-0086</b>		
Client <b>Linery International</b>		
Supplier <b>Garmends Asia Pacific</b>		

Inspection Criteria Sheet / Style/Color Conformity / Defects / Defects 1

Broken, cracked, missing, or wrong color accessory	Critical
<p>– Notes</p> <p>Small holes were found in the sampled batch</p> <p>– Photos</p>  <p>Photo 4</p>	

Signatures

Overall Inspection Conclusion	Fail
-------------------------------	------

## Batch Sample Information

You may attach image of product design here.

### — Photos

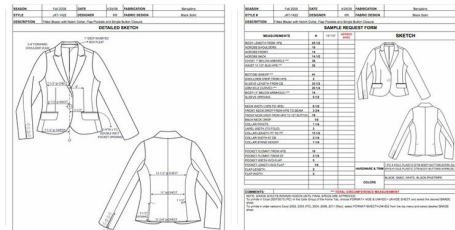


Photo 1

Photo 2

### Product Description

Women's Blazer; made of terylene fiber, with two side pockets; available from size 12-16; grey 002, designed in California; to be made in the Philippines

### Client

Linery International

### Supplier

Garmends Asia Pacific

### Manufacturer

Harper Textiles

### PO Number

00058769034

### Item No.

2003944

### Order Quantity

100

### Inspection Type

Pre-production inspection

### Sampling standard

ANSI/ASQ Z1.4 - 2008/ MIL-STD - 105E Normal Sampling

Style/Color Conformity

Attach image of client's product design specification sheet and compare sampled batch to the design. Attach images for proof of conformity/non-conformity.

– Photos

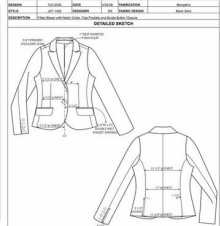



Photo 3

Defects

Defects 1

1 Failed

Broken, cracked, missing, or wrong color accessory	Critical
<p>– Notes</p> <p>Small holes were found in the sampled batch</p> <p>– Photos</p>  <p>Photo 4</p>	
Substituted accessory style, size, or position	N/A
Distorted, pleated, twisted, broken or rusted button/stud	Minor
Incorrectly placed buttons, beads or sequins	N/A
Wrong thread color does used with button, bead or sequin	N/A
Substituted buttons, studs or beads	N/A

Measurement Check

## Measurement Point

### Measurement Point 1

Measurement Point Neck width from edge to edge (shoulder forward 1/2")
Tolerance 1/4"
Size 12 10"
Size 14 10 1/4"
Size 16 10 1/2"
Size 18 10 3/4"

### Measurement Point 2

Measurement Point Front neck drop from high point shoulder
Tolerance 1/4"
Size 12 4 3/8"
Size 14 4 1/2"
Size 16 4 5/8"
Size 18 4 3/4"

### Measurement Point 3

Measurement Point Back neck drop from high point shoulder
--

Tolerance 1/4"
Size 12 4 1/8"
Size 14 4 1/4"
Size 16 4 3/8"
Size 18 4 1/2"

**Measurement Point 4**

Measurement Point Shoulder width from edge to edge each side
Tolerance 1/8"
Size 12 1 3/4"
Size 14 1 3/4"
Size 16 1 3/4"
Size 18 1 3/4"

**Measurement Point 5**

Measurement Point Across from 5" from high point shoulder
Tolerance 1/4"
Size 12 12"
Size 14 12 3/8"

Size 16 12 3/4"
Size 18 13 1/8"

**Measurement Point 6**

Measurement Point Front yoke width along seam
Tolerance 1/4"
Size 12 13 1/8"
Size 14 13 1/2"
Size 16 13 7/8"
Size 18 14 1/4"


**Measurement Point 7**

Measurement Point Chest 1" below arm extend
Tolerance 1/4"
Size 12 20 1/4"
Size 14 21"
Size 16 21 3/4"
Size 18 22 1/2"

**Quantity Conformity**

Product Reference Number <b>2003944</b>
Purchase Order Number <b>00058769034</b>
Order Quantity <b>1000</b>
Available Quantity [Pieces Packed] <b>500</b>
Available Quantity [Packed CTN] <b>110</b>
Available Quantity [Pieces Unpacked] <b>390</b>
Not Finished Quantity <b>0</b>
Sample Size [Packed Lot] <b>30</b>
Sample Size [Unpacked Lot] <b>70</b>

**Marking/Label/Packaging**

Attach summary of client's specifications on marking/label/packaging here.	
Unit/Packaging/Artwork	Pass
<p>– Photos</p>  <p>Photo 5</p>	
Polybag Printing/Label	N/A
Inner Packing	N/A
Outer Packing	N/A



## On-site Tests

### Pull Test for Accessories

Apply a force of $6 \pm 0.2$ kg for 10 seconds on all accessories by means of a pull gauge. Accessories must remain securely in place. If there is no pull gauge available, evaluate by hand pull and include a note in the report.	
Sample size	2 pcs
Did the item pass/fail the test?	Pass

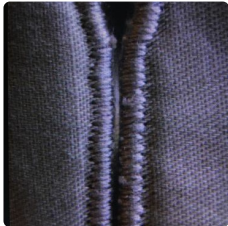
### Fatigue Test for Accessories

Check the fasteners (buttons, snaps, zippers, etc.) as intended for 50 cycles. Accessories must be undamaged without any loss of function following the test .	
Sample Size	2 pcs
Did the item pass/fail the test?	Pass

### Stretch Test for Elastic Fabric and Straps

Stretch elastic fabrics and straps to check the elasticity. They must have proper elasticity without elastic fibers or stitches breaking.	
Sample Size	G
Did the item pass/fail the test?	Pass

### Buttonholes Test

Button not sewn securely	N/A
- Photos	
	
Photo 6	

Incomplete stitching or uncut buttonhole	Minor
One or more skipped stitches at buttonhole	N/A
Buttonhole incorrect size for buttons	Minor
Wrong direction of buttonhole	N/A
Buttonhole fraying around edges causing button to catch on threads need trimming	N/A

# Signatures

1 Failed 0.00%

### Final Comments/Observations

The sampled batch received a total quality grade of 94% as majority of the sampled batch met the product specifications. However, there were pieces that were found to have defects, particularly in style and colour conformity. These findings have to be corrected, thus another sample batch is requested for testing. The next testing will be 5 days from now.

### Overall Inspection Conclusion

Fail

### Supplier's Representative: Name and Signature



Adam Coles

1st Aug, 2019 4:47 PM +08

### Manufacturer's Representative: Name and Signature



Jonathan Tarlengco

1st Aug, 2019 4:48 PM +08

### Buyer's Representative: Name and Signature



Jenny Chung

1st Aug, 2019 4:48 PM +08

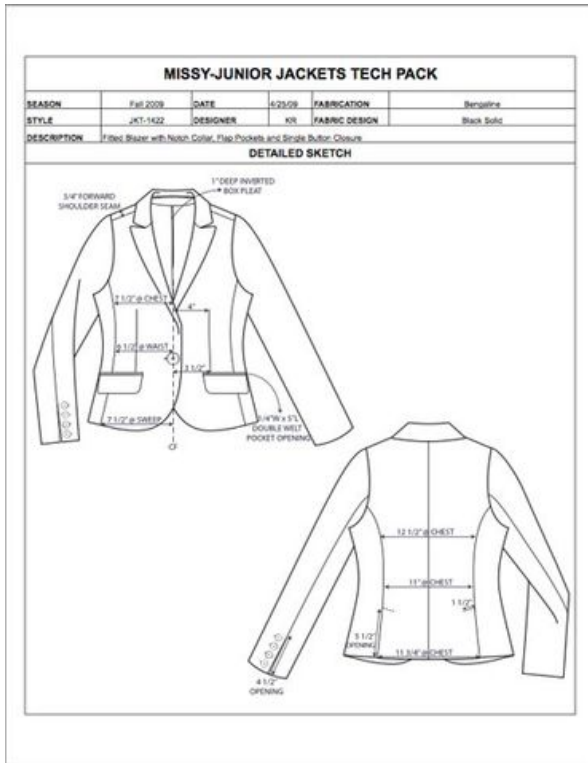


Photo 1

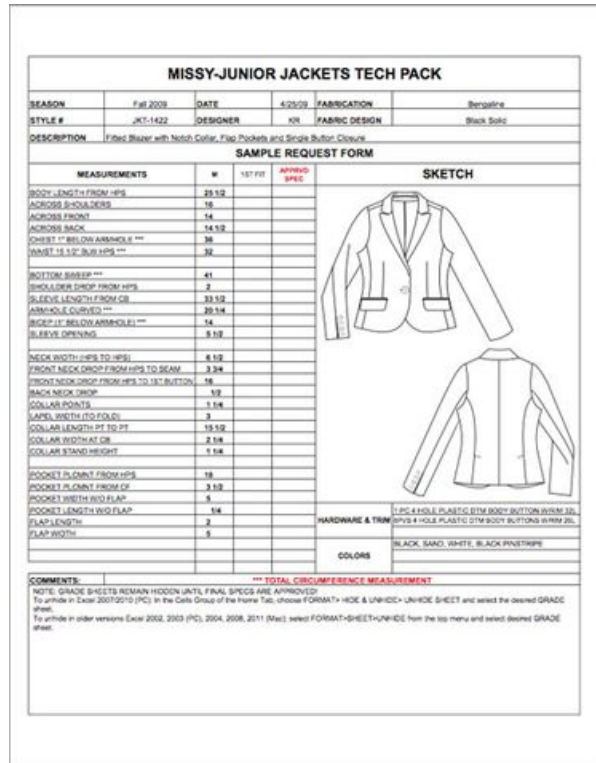


Photo 2

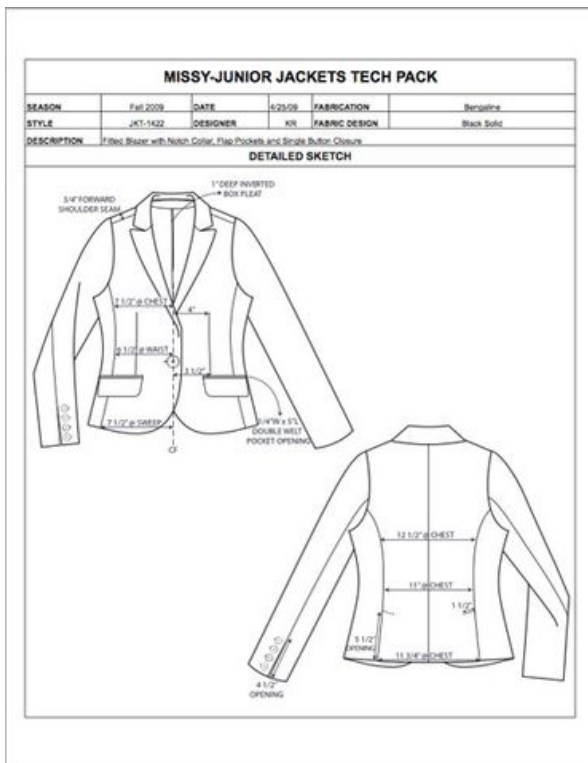


Photo 3



Photo 4



Photo 5



Photo 6