



16 Apr 2019 / EECU322406 / Expert Exporters Co.

ISO Container Inspection Checklist Conducted on 16th Apr, 2019 By SafetyCulture Staff

Complete

Inspection score	Failed items	Created actions
87.67%	9	3
Site Sydney		
Shipper Expert Exporters Co.		
Country of Origin United States of America		
Container Number EECU322406		
Inspected by Sabrina Diaz		
Conducted on 📅 16th Apr, 2019 ⌚ 12:18 PM +08		

Failed items

9 Failed

ISO Container Inspection Checklist / Undercarriage

Bottom side rails

Fail

Photos



Photo 2

Actions

To Do

Follow up condition of undercarriage side rail on next ISO container inspection (possible need for repair)

ISO Container Inspection Checklist / Doors

Door sill

Fail

Notes

Monitor minor damage

Photos



Photo 5

ISO Container Inspection Checklist / Left Side / Interior

Vertical plate

Fail

Photos



Photo 6

Actions

To Do Coordinate with maintenance personnel and arrange for the repair of this part before packing

ISO Container Inspection Checklist / Left Side / Exterior

Top side rail

Fail

Notes

Monitor minor damage

Photos

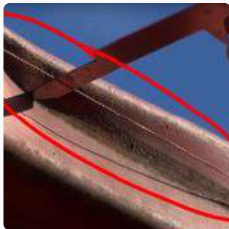


Photo 7

Panel

Fail

Notes

Contain small area of corrosion before it spreads

Photos



Photo 8

ISO Container Inspection Checklist / Front Wall / Interior

Light leak

Fail

Photos



Photo 9

Actions

To Do

Make sure to repair this part of the roof near the front wall before packing cargo and take photos when done

ISO Container Inspection Checklist / Floor

Flooring

Fail

Notes

Patch this up, make sure no nails are protruding

Photos



Photo 11

ISO Container Inspection Checklist / Roof

Roof panel

Fail

Notes

This is the root cause for roof hole near the front wall. Repair this as well.

Photos



Photo 12


Light leaks

Fail

Actions

3 Actions

SafetyCulture Staff created a High priority action

To Do  16th Apr, 2019 8:00 AM +08

Cover roof hole near front wall

Make sure to repair this part of the roof near the front wall before packing cargo and take photos when done

ISO Container Inspection Checklist / Front Wall / Interior

Light leak

SafetyCulture Staff created a High priority action

To Do  16th Apr, 2019 8:00 AM +08

Repair left side interior panel

Coordinate with maintenance personnel and arrange for the repair of this part before packing

ISO Container Inspection Checklist / Left Side / Interior

Vertical plate

SafetyCulture Staff created a High priority action

To Do  17th Apr, 2019 8:00 AM +08

Monitor minor damage



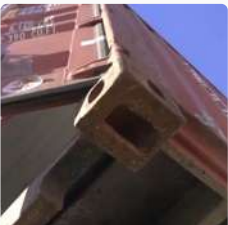
Follow up condition of undercarriage side rail on next ISO container inspection (possible need for repair)



ISO Container Inspection Checklist / Undercarriage

Bottom side rails

ISO Container Inspection Checklist

9 Failed 3 Actions 87.67%

Corner fittings	Pass
Bottom end rails Notes Still in good condition. Photos  Photo 1	Pass
Bottom side rails Photos  Photo 2 Actions <div data-bbox="204 1317 1390 1406">To Do Follow up condition of undercarriage side rail on next ISO container inspection (possible need for repair)</div>	Fail
Door sill Photos  Photo 3	Pass
Cross members	Pass
Forklift tunnels	Pass


ISO identification	Pass
<p>Notes</p> <p>Clearly visible ISO marks and CSC plate</p> <p>Photos</p>  <p>Photo 4</p>	
CSC safety approval	Pass
Stencils	Pass
Corner posts	Pass
Corner fittings	Pass
Door header	Pass
Door sill	Fail
<p>Notes</p> <p>Monitor minor damage</p> <p>Photos</p>  <p>Photo 5</p>	
Door fittings	Pass
Door lining	Pass
Door gaskets	Pass
Rods	Pass

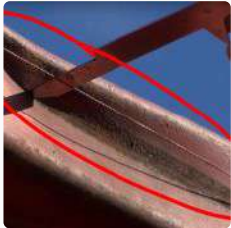

Rod retainers	Pass
Cams	Pass
Cam retainers	Pass
J-bars	Pass
Rain guttering	Pass
Placard holder	Pass

Left Side

Interior

1 Failed 1 Actions


Plywood lining	Pass
Kick rail	Pass
Vertical plate	Fail
<p>Photos</p>  <p>Photo 6</p> <p>Actions</p> <div style="border: 1px solid #ccc; padding: 5px; margin-top: 5px;"> To Do Coordinate with maintenance personnel and arrange for the repair of this part before packing </div>	
Horizontal rail	Pass
Light leak	Pass

ISO identification	Pass
Corner fittings	Pass
Corner posts	Pass
Top side rail	Fail
<p>Notes</p> <p>Monitor minor damage</p> <p>Photos</p>  <p>Photo 7</p>	
Bottom side rail	Pass
Forklift pockets	Pass
Panel	Fail
<p>Notes</p> <p>Contain small area of corrosion before it spreads</p> <p>Photos</p>  <p>Photo 8</p>	
Placard holder	Pass

Front Wall

Interior

1 Failed 1 Actions

Plywood lining	Pass
Kick plate	Pass
Load bearing surfaces	Pass
Light leak	Fail
Photos	
	
Photo 9	
Actions	
To Do Make sure to repair this part of the roof near the front wall before packing cargo and take photos when done	

Exterior


ISO identification	Pass
Corner fittings	Pass
Corner posts	Pass
Top end rail	Pass
Bottom end rail	Pass
Panel	Pass
Placard holder	Pass


Right Side


Interior

Plywood lining	Pass
Kick rail	Pass
Vertical plate	Pass
Horizontal rail	Pass
Light leak	Pass

Exterior

ISO identification	Pass
Corner fittings	Pass
Corner posts	Pass
Top side rail	Pass
Bottom side rail	Pass
Forklift pockets	Pass
Panel	Pass
Photos	
	
Photo 10	
Placard holder	Pass

Flooring	Fail
<p>Notes</p> <p>Patch this up, make sure no nails are protruding</p> <p>Photos</p>  <p>Photo 11</p>	
Floor fasteners	Pass
Threshold plate	Pass
Tie-down devices	Pass
Light leaks	Pass

ISO identification	Pass
Corner fittings	Pass
Corner posts	Pass
Top end rail	Pass
Bottom end rail	Pass
Roof panel	Fail
<p>Notes</p> <p>This is the root cause for roof hole near the front wall. Repair this as well.</p> <p>Photos</p>  <p>Photo 12</p>	
Roof bows	Pass
Light leaks	Fail


Sign off

I have visually verified to the best of my ability the condition of the container as noted above and found that the container is structurally sound, weather tight, has no false compartments, contains no un-manifested material and the locking mechanisms are in good order.

Additional Recommendations

We should keep on using iAuditor so we can easily identify damages, maximize utilisation of our shipping containers and prevent container fires. Monitor all minor damages and repair roof hole and left side interior panel.

Name & Signature of Inspector



Sabrina Diaz
16th Apr, 2019 2:07 PM +08

Photos

12 Photos



Photo 1



Photo 2



Photo 3



Photo 4



Photo 5



Photo 6

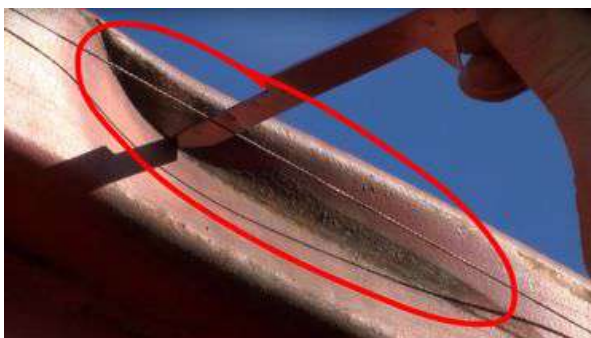


Photo 7



Photo 8



Photo 9



Photo 10



Photo 11



Photo 12