



Electrical Control Cabinet (TAG22T3-100B) / 03 Apr 2019 / Sierra Blassingame

Factory Acceptance Test Checklist Conducted on 3rd Apr, 2019 By SafetyCulture Staff

Complete

Inspection score	Failed items	Created actions
82.93%	7	2
Site Sydney		
Equipment Electrical Control Cabinet (TAG22T3-100B)		
Client Bigwin Realty Corporation		
Manufacturing Facility Location JT Manufacturers 4790 Seneca Dr., Portland, OR 97205		
Quality Manager Sierra Blassingame		
Conducted on 📅 3rd Apr, 2019 ⌚ 8:01 AM +08		

Failed items

7 Failed

Inspection / Factory Acceptance Test (FAT) / Pre-Factory Acceptance Test Checklist / Factory Acceptance Test Protocol

Recommended Spare Parts Lists

Incomplete

Actions

Done

Coordinate with fabrication manager and design engineers to gather the complete list of recommended spare parts for machinery maintenance.

Inspection / Factory Acceptance Test (FAT) / Pre-Factory Acceptance Test Checklist / Factory Acceptance Test Preparation

Safety Inspection

Incomplete

Are FAT personnel aware of the location of the first aid cabinet?

No

Notes

Informed FAT personnel about the location of the first aid cabinet for proper emergency response procedure.

Are machinery nameplates visible?

No

Photos

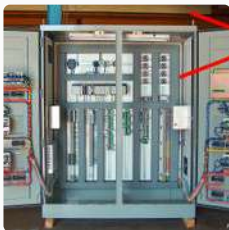


Photo 9

Actions

Done

The current location of the nameplate makes it hard for the operator to view. Add to and update the punch list.

Inspection / Factory Acceptance Test (FAT) / Factory Acceptance Test Checklist / Factory Acceptance Test Personnel

Are all FAT personnel equipped with the right PPE?

No

Notes

Coordinated with health and safety officer for proper PPE of FAT personnel

Inspection / Factory Acceptance Test (FAT) / Factory Acceptance Test Checklist / Factory Acceptance Test of Equipment

Safety

Fail

Maintenance

Fail

Actions

2 Actions

SafetyCulture Staff created a High priority action

Done

📅 4th Apr, 2019 8:00 AM +08

Relocate nameplate

The current location of the nameplate makes it hard for the operator to view. Add to and update the punch list.

Inspection / Factory Acceptance Test (FAT) / Pre-Factory Acceptance Test Checklist / Factory Acceptance Test Preparation

Are machinery nameplates visible?

SafetyCulture Staff created a High priority action

Done

📅 4th Apr, 2019 8:00 AM +08

Provide recommended spare parts list

Coordinate with fabrication manager and design engineers to gather the complete list of recommended spare parts for machinery maintenance.

Inspection / Factory Acceptance Test (FAT) / Pre-Factory Acceptance Test Checklist / Factory Acceptance Test Protocol

Recommended Spare Parts Lists

Inspection


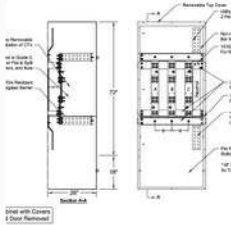
7 Failed 2 Actions 82.93%

Factory Acceptance Test (FAT)

Pre-Factory Acceptance Test Checklist

Factory Acceptance Test Protocol

1 Failed 1 Actions

Standard Work Procedures	Complete
Certificates of Compliance	Complete
Photos 	
Welding Processes Qualifications	Complete
As-built Technical Drawings	Complete
Photos 	
Instruments Calibration Certificates	Complete
Equipment Data Sheets	Complete
Materials Data Sheets	Complete
Standard Maintenance Procedures	Complete
Installation, Maintenance and Users' Manuals	Complete

Recommended Spare Parts Lists

Incomplete

Actions

Done Coordinate with fabrication manager and design engineers to gather the complete list of recommended spare parts for machinery maintenance.

Training Materials

Complete

FAT Procedure

Complete

Photos



Photo 3



Photo 4



Photo 5




Photo 6



Photo 7



Photo 8

Hazard Identification	Complete
Safety Inspection	Incomplete
Are guard doors accessible and easy to use?	Yes
Are emergency stop buttons in good locations?	Yes
Are fire alarms functioning correctly?	Yes
Are fire extinguishers in place and clearly marked?	Yes
Are FAT personnel aware of the location of the first aid cabinet?	No
<p>Notes</p> <p>Informed FAT personnel about the location of the first aid cabinet for proper emergency response procedure.</p>	
Are emergency numbers displayed?	Yes
Are safety switches installed?	Yes
Are adequate machine guards in place?	Yes
Are there adequate equipment and material labels?	Yes
Are machinery nameplates visible?	No
<p>Photos</p>  <p>Photo 9</p>	
<p>Actions</p> <div style="border: 1px solid gray; padding: 5px;"> <p>Done The current location of the nameplate makes it hard for the operator to view. Add to and update the punch list.</p> </div>	
Ergonomic Assessment	Complete

Factory Acceptance Test Checklist

Factory Acceptance Test Personnel

1 Failed

Were pre-tests conducted?	Yes
Do the design engineers and fabrication manager agree that the equipment is ready for FAT?	Yes
Are operators and maintenance personnel present?	Yes
Is the client aware of the acceptance criteria?	Yes
Are all FAT personnel equipped with the right PPE?	No
Notes Coordinated with health and safety officer for proper PPE of FAT personnel	

Factory Acceptance Test of Equipment

2 Failed

Startup process	Pass
Safety	Fail
Control System	Pass
User Interface	Pass
Ergonomics	Pass
Performance	Pass
Shutdown process	Pass
Maintenance	Fail
Regulatory/Sanitary Design	Pass
Conformance to Specifications	Pass

Post-Factory Acceptance Test Checklist

Punch List	Complete
------------	----------

Completion

Additional observations

Nameplates relocated to be visible to the operator and pass the safety criteria. Recommended spare parts list completed for maintenance personnel and pass the maintenance criteria.

The equipment has been produced according to the specifications of the client. Since the equipment reliability has been verified, it is scheduled for delivery and installation at the site of the client.

Full Name and Signature of Quality Manager



Sierra Blassingame

3rd Apr, 2019 9:41 AM +08

Full Name and Signature of Client Representative



Ruth Chundler

3rd Apr, 2019 9:42 AM +08

Full Name and Signature of Head of Design Engineers



Ryan Samaniego

3rd Apr, 2019 9:42 AM +08

Full Name and Signature of Fabrication Manager



James Beaufort

3rd Apr, 2019 9:43 AM +08

Full Name and Signature of Maintenance Coordinator



Deborah Peachey

3rd Apr, 2019 9:44 AM +08

Full Name and Signature of Head Operator



Hansen Lubbock

3rd Apr, 2019 9:45 AM +08



Photo 1



Photo 3

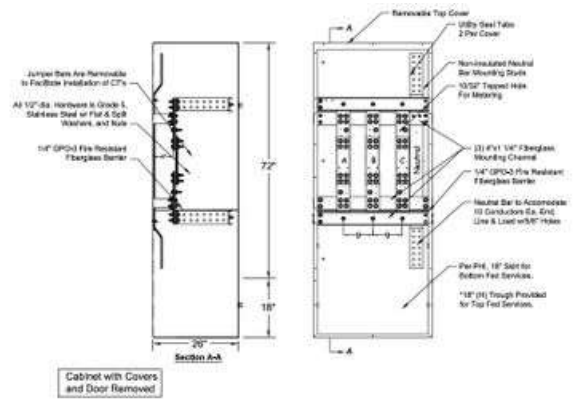


Photo 2



Photo 4



Photo 5



Photo 6



Photo 7



Photo 8

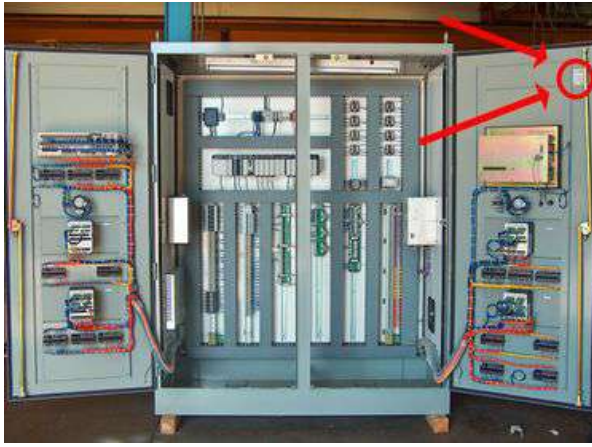


Photo 9