



Smelting Ores / 5 Apr 2019 / John S T

Plant Risk Assessment Template Conducted on 5th Apr, 2019 By SafetyCulture Staff

Complete

Inspection score	Failed items	Created actions
56.25%	0	0
Site name Smelting Ores		
Conducted on 5th Apr, 2019 10:00 AM +08		
Prepared by John S T		
Location Phillips Run Rd, Summersville, WV 26651, USA		

Plant Risk Assessment

56.25%

Plant Information

Plant Item foundry casting
Plant Identification Details (Model/ Make/ Serial) GOT1442019
Plant Owner Name Dany T. T.
Plant task description use of foundry casting at new facility
Is the plant designed to perform the task? Yes
Is the plant in good working condition and free of weeds and mud? Yes

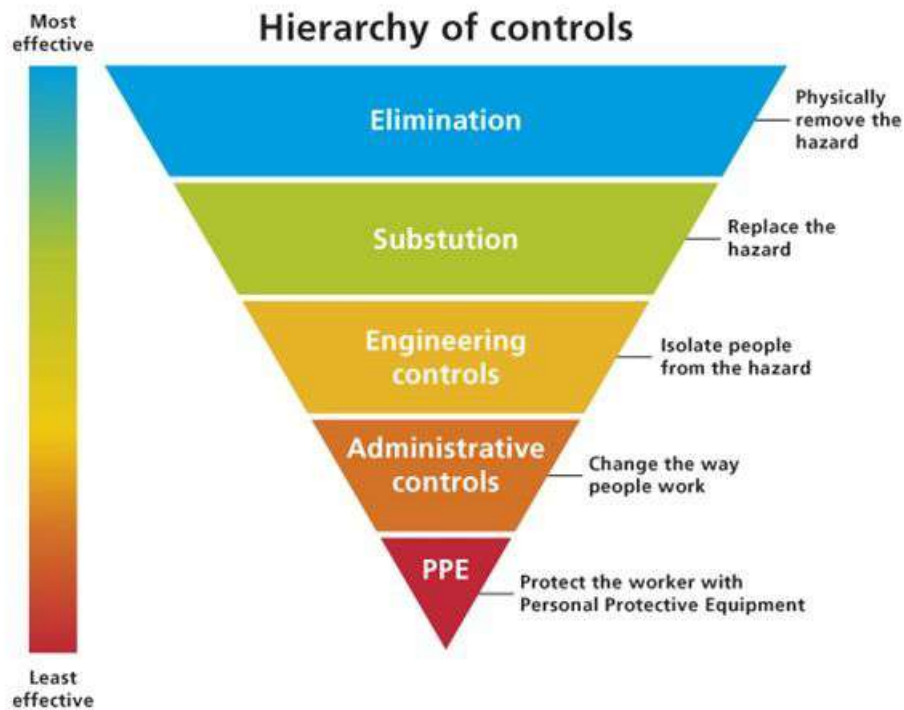
References

Risk Matrix Reference

Risk Matrix

Likelihood		Very Likely	Likely	Unlikely	Highly Unlikely
Consequences	Fatality	High	High	High	Medium
	Major Injuries	High	High	Medium	Medium
	Minor Injuries	High	Medium	Medium	Low
	Negligible Injuries	Medium	Medium	Low	Low

Hierarchy of Controls Reference



Explosion/Fire

Can anyone be injured by an explosion of gas, vapours, liquids, dusts or other substances, triggered by plant operation?

Yes

Hazard

Activity

Monitoring metal casting

Description of hazards identified

molten metal, and sparks

Photo of hazard (optional)

Photos



Photo 1

Persons at risk

Supervisor

Initial risk rating

Initial consequence	Fatality
Initial likelihood	Likely
Initial risk rating	Medium

Residual risk rating

Residual consequence	Minor Injuries
Residual likelihood	Highly Unlikely
Residual risk rating	Low

Controls

Select control measures Engineering Controls PPE
Enter description of control measures Increase distance from viewing desk and proper use of PPE.

Suffocation

Can anyone be suffocated due to lack of oxygen or atmospheric contamination?	Yes
--	-----

Hazard

Activity Smelting
Description of hazards identified fumes from smelting activity
Photo of hazard (optional) Unanswered
Persons at risk all workers on production floor

Initial risk rating

Initial consequence	Major Injuries
Initial likelihood	Unlikely
Initial risk rating	Medium

Residual risk rating

Residual consequence	Negligible Injuries
Residual likelihood	Highly Unlikely
Residual risk rating	Low

Controls

Select control measures <input type="button" value="Elimination"/>
Enter description of control measures improved ventilation by increasing capacity of exhaust


Pressurized Content

Can anyone be injured by fluids or gases under high pressure due to plant failure or misuse?	<input type="button" value="No"/>
--	-----------------------------------

Electricity Contact

Can anyone be injured by electrical shock or burnt due to damaged or poorly maintained leads, switches or equipment?	<input type="button" value="Yes"/>
--	------------------------------------

Hazard

Activity Use of controls
Description of hazards identified exposed wires
Photo of hazard (optional) Photos  Photo 2
Persons at risk machine operator

Initial risk rating

Initial consequence	Minor Injuries
Initial likelihood	Likely
Initial risk rating	Medium

Residual risk rating

Residual consequence	Negligible Injuries
Residual likelihood	Highly Unlikely
Residual risk rating	Low

Controls

Select control measures Substitution PPE
Enter description of control measures replaced the wiring and constant use of PPE

Cutting

Can anyone be cut, stabbed or punctured by coming in contact with moving plant or parts?

No

Crushing

Can anyone be crushed due to falling, uncontrolled or unexpected movement of plant or its load? Unanswered

Entanglement

Can anyone's hair, clothing, gloves, necktie, jewellery, rags and other materials become entangled with moving parts of plant, or materials in motion?

No

Slips, Trips, Falls

Can anyone slip, trip, or fall due to: • uneven, slippery, or steep surfaces, • obstacles or poor housekeeping • ladders, stairs, platforms, or lack of guardrails

Yes

Hazard

Activity

going to the second floor via east entrance

Description of hazards identified

missing railing

Photo of hazard (optional)

Unanswered

Persons at risk

all employees

Initial risk rating

Initial consequence

Major Injuries

Initial likelihood

Unlikely

Initial risk rating

Medium

Residual risk rating

Residual consequence	Negligible Injuries
Residual likelihood	Highly Unlikely
Residual risk rating	Low

Controls

Select control measures

Elimination

Enter description of control measures

installed the railing

Ergonomics

Can anyone be injured due to poorly designed work area, repetitive body movement, poor light placing, or other ergonomic issues?

No

Radiation

Can anyone in the plant's vicinity suffer injury or illness due to exposure to radiation in the form of infra-red, ultra violet light, or microwaves?

No

Noise

Can anyone in the plant's vicinity suffer injury or illness due to exposure to noise?	Yes
---	-----

Hazard

Activity working within the facility
Description of hazards identified noise at the facility
Photo of hazard (optional) Unanswered
Persons at risk employees at production floor

Initial risk rating

Initial consequence	Minor Injuries
Initial likelihood	Very Likely
Initial risk rating	Medium

Residual risk rating

Residual consequence	Negligible Injuries
Residual likelihood	Highly Unlikely
Residual risk rating	Low

Controls

Select control measures Administrative Controls PPE
Enter description of control measures Admin staff are required to request for access if need to go to production floor. All employees cannot enter the production floor if not wearing PPE.


Vibration

Can anyone in the plant's vicinity suffer injury or ill-health due to exposure to vibration?	No
--	----

Temperature/Moisture

Can anyone be injured or suffer ill-health due to exposure to: • high or low temperatures • objects of high or low temperatures • moisture	Yes
--	-----

Hazard

Activity working near molten metal
Description of hazards identified heat from the molten metal
Photo of hazard (optional)
Photos  Photo 3
Persons at risk all employees at production floor

Initial risk rating

Initial consequence	Minor Injuries
Initial likelihood	Unlikely
Initial risk rating	Medium

Residual risk rating

Residual consequence	Negligible Injuries
Residual likelihood	Highly Unlikely

Residual risk rating

Low

Controls

Select control measures

Administrative Controls

Enter description of control measures

training to reinforce proper distance from molten metals

Other Risks

Other risks that can cause injury or ill-health?

No

Completion

Recommendations

Continue to reinforce safety practices through trainings and visible signs.

Name and Signature



John S. T.

5th Apr, 2019 7:31 PM +08

Photos

3 Photos



Photo 1

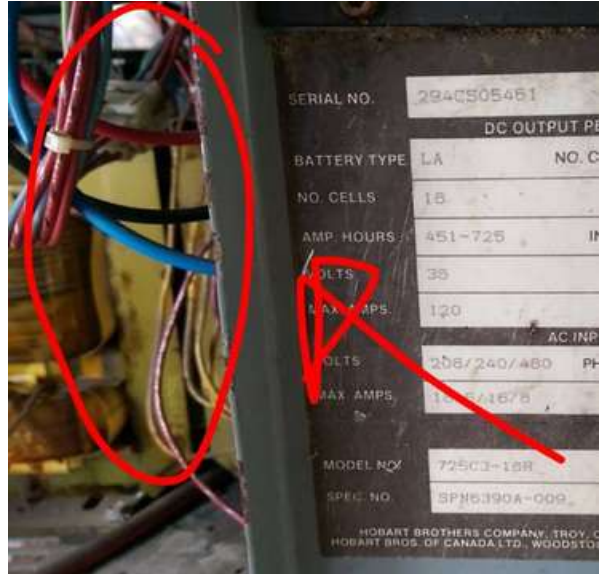


Photo 2



Photo 3